

Harbour  
Trust

FREE TO VISIT

# Harbour Highlights

Natural beauty. Historic landmarks.  
Panoramic views. Incredible stories.

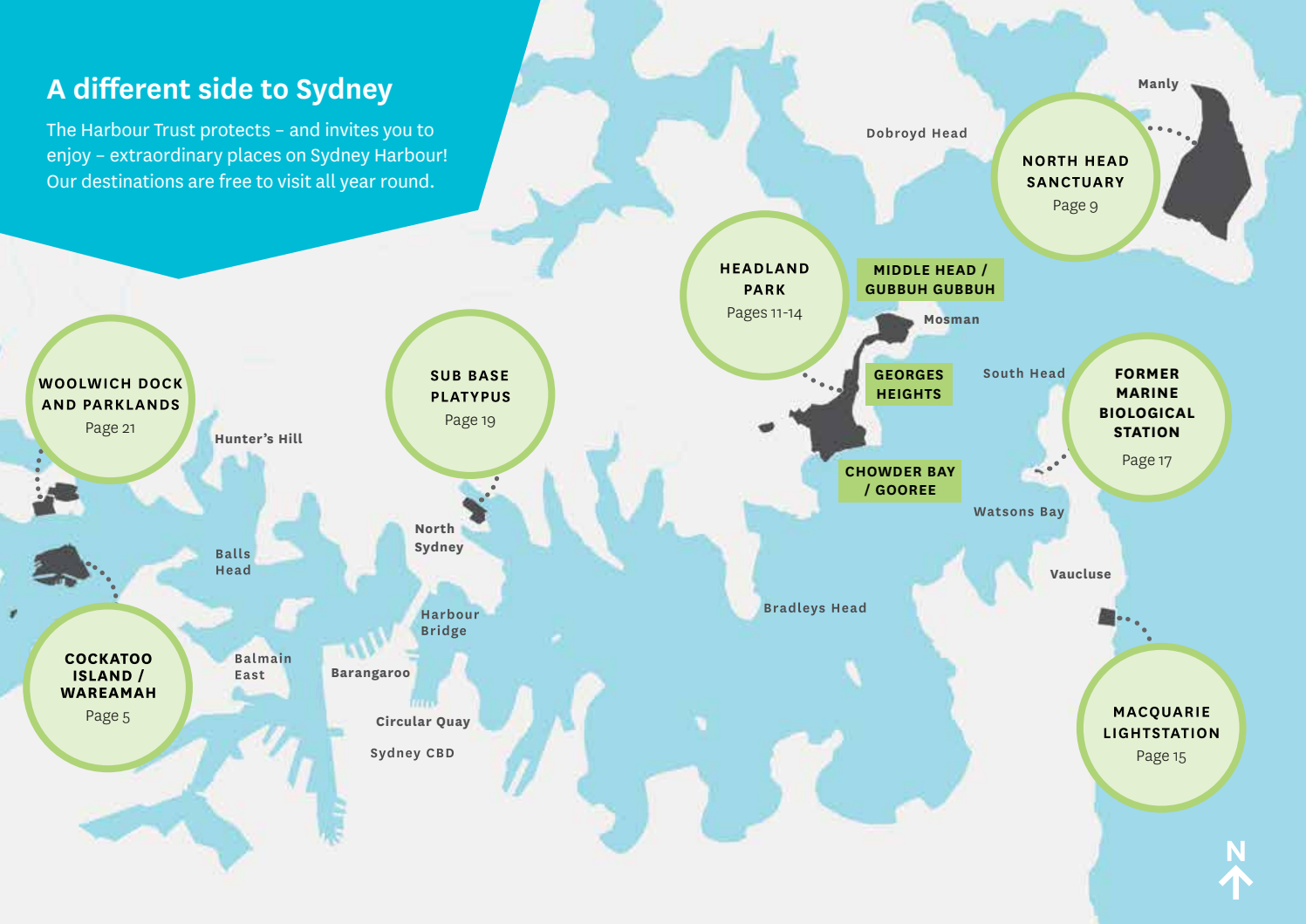
Our extraordinary destinations reveal  
a different side to Sydney Harbour.



[harbourtrust.gov.au](http://harbourtrust.gov.au)

## A different side to Sydney

The Harbour Trust protects – and invites you to enjoy – extraordinary places on Sydney Harbour.  
Our destinations are free to visit all year round.



### WOOLWICH DOCK AND PARKLANDS

Page 21

### COCKATOO ISLAND / WAREAMAH

Page 5

### SUB BASE PLATYPUS

Page 19

### HEADLAND PARK

Pages 11-14

### MIDDLE HEAD / GUBBUH GUBBUH

Mosman

### GEORGES HEIGHTS

### CHOWDER BAY / GOOREE

### FORMER MARINE BIOLOGICAL STATION

Page 17

### MACQUARIE LIGHTSTATION

Page 15

Dobroyd Head

Manly

### NORTH HEAD SANCTUARY

Page 9

Hunter's Hill

Balls  
Head

Balmain  
East

Barangaroo

North  
Sydney

Harbour  
Bridge

Circular Quay

Sydney CBD

Bradleys Head

South Head

Watsons Bay

Vaucluse



We acknowledge the Traditional Custodians and Owners of the lands, waters and sky of Sydney Harbour, including the extraordinary places we manage and protect.

Our destinations are located in the homelands of the Borogegal, Birrabirragal, Cammeraygal, Gadigal, Gayamagal, Wallumedegal and Wangal peoples. We pay our respects to their Elders past, present and emerging.



# Cockatoo Island / Wareamah

## Sydney Harbour

-  Visitor Centre
-  Self-guided and group tours
-  Waterfront campground
-  Heritage accommodation
-  Historic destination
-  Cafes
-  Lookouts
-  Picnic areas
-  Public transport

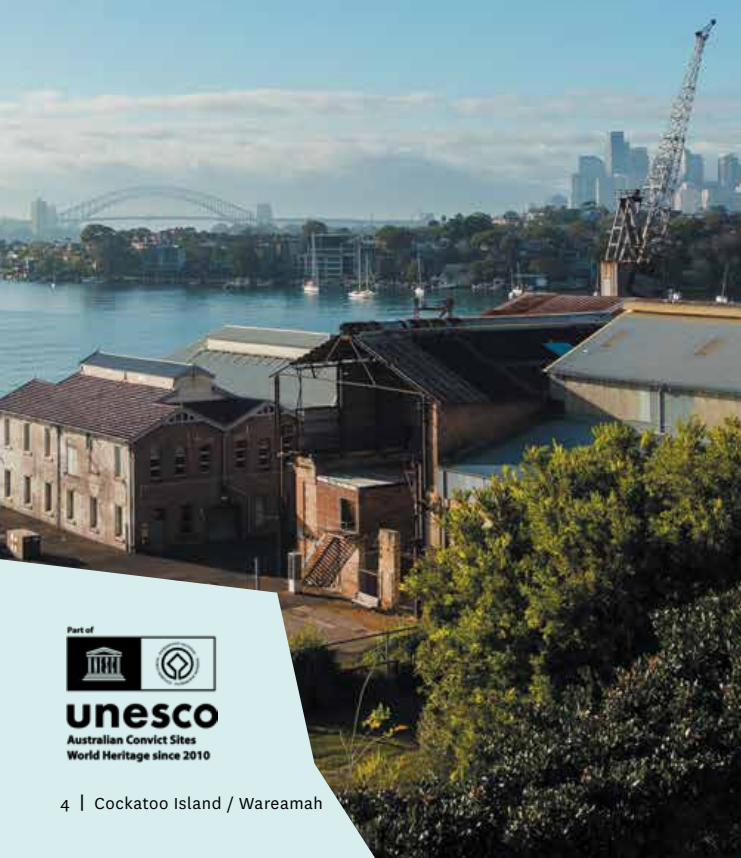


Located in the heart of Sydney Harbour, Cockatoo Island / Wareamah captivates visitors owing to its dramatic landscape, award-winning accommodation and panoramic views.

### At a glance

Known to Sydney's First Nations peoples as Wareamah, Cockatoo Island is a short ferry ride from both the city and wharves along Parramatta River. A major drawcard is the UNESCO World Heritage listed Convict Site, which provides a window into the period when the island was a gaol.

Other highlights include a waterfront campground, licensed cafes, the historic dockyard, holiday houses and apartments and tours. Plus, we offer exciting seasonal events, including outdoor concerts, steam crane demonstrations and our annual New Year's Eve celebrations.





## Accommodation

Need a holiday? Escape to Cockatoo Island for your next vacation! Bordered by landscaped gardens, our historic houses and apartments combine authentic heritage character with modern amenities and harbour views.



Plus, our waterfront campground is an opportunity to unwind in a spectacular outdoor setting directly on Sydney Harbour.



Our camping packages cater for all budgets, group sizes and occasions, including romantic getaways and family vacations.



## Guided tours

Travel back in time with one of our guided tours! Accompanied by a knowledgeable guide, you'll discover landmarks from the island's turbulent convict era (1839–69) and celebrated dockyard years (1857–1991).

## Hot tip!

Head to our Visitor Centre, near the main entrance, and you'll be greeted by a friendly visitor service volunteer! They'll hand you a map and offer tips for a great day out.

## Self-guided tours

Prefer to journey through the island's history at your own pace? Purchase an audio tour from our Visitor Centre or embark on our free Talking Object Tour, which uses colourful signage and mobile technology to bring cranes, docks and other historic landmarks to life.



**Scan to plan  
your trip**



# North Head Sanctuary

## Manly

-  Visitor Centre
-  Self-guided and group tours
-  Lookouts
-  Picnic areas
-  Historic destination
-  Bondi to Manly walk
-  Cafes
-  Walking tracks
-  Bike tracks
-  Natural attractions
-  Public transport
-  Free parking

A nature refuge in Gayamagal Country, North Head Sanctuary is situated at the northern entrance to Sydney Harbour – just a hop and a skip from Manly Beach!



### At a glance

Defined by coastal bushland and dramatic cliffs, North Head Sanctuary features scenic walking trails with jaw-dropping views as well as military fortifications dating to the Second World War, reminders of the nation's early quarantine practices and a vibrant community of native animals and plants.

### Attractions

Popular landmarks include the Third Quarantine Cemetery, Australia's Memorial Walk, the Art Deco Barracks Precinct, the Hanging Swamp and North Fort – a historic military complex that once defended Sydney from the threat of invaders.

### Need to refuel?

Head to Bella Vista Cafe for Italian cuisine paired with a panoramic view overlooking the Pacific Ocean and Sydney Harbour.

### Guided tours

Available Sundays, our Defence of Sydney Tour allows you to walk in the footsteps of those who served at North Fort. Accompanied by a knowledgeable guide, you will descend into a 200-metre-long military tunnel complex, discover a former gun emplacement, and uncover the secrets of an underground bunker known as the Plotting Room. We also offer our Third Quarantine Cemetery Tour on select dates.

### Hot tip!

Head to our Visitor Centre, near North Fort, and you'll be greeted by a friendly visitor service volunteer! They'll hand you a map and offer tips for a great day out.



**Scan to plan  
your trip**



# Headland Park

Mosman

Chowder Bay / Gooree  
Georges Heights  
Middle Head / Gubbuh Gubbuh

-  Cafes and restaurants
-  Self-guided and group tours
-  Lookouts
-  Natural attractions
-  Historic destination
-  Tennis courts
-  Walking tracks
-  Bondi to Manly walk
-  Picnic areas
-  Public transport
-  Free and paid parking

## Chowder Bay / Gooree



A stunning retreat on the Mosman shoreline, Chowder Bay is a popular destination for families and receives seasonal visits from penguins, seals and whales.

### Things to do

Attractions include charming eateries and water activities, as well as access to the beach at nearby Clifton Gardens and a coastal track leading to Taronga Zoo.



Scan to plan  
your trip

### At a glance

Located in Borogegal Country, Headland Park features 3 precincts – Chowder Bay / Gooree, Georges Heights and Middle Head / Gubbuh Gubbuh. Formerly the site of 6 Defence bases, Headland Park features military structures dating to the late 1800s plus scenic trails that link to other attractions nearby.





## Georges Heights

Located just beyond Mosman Village, Georges Heights is known for its coastal bush trails, thriving artist community and cafe culture.

### Things to do

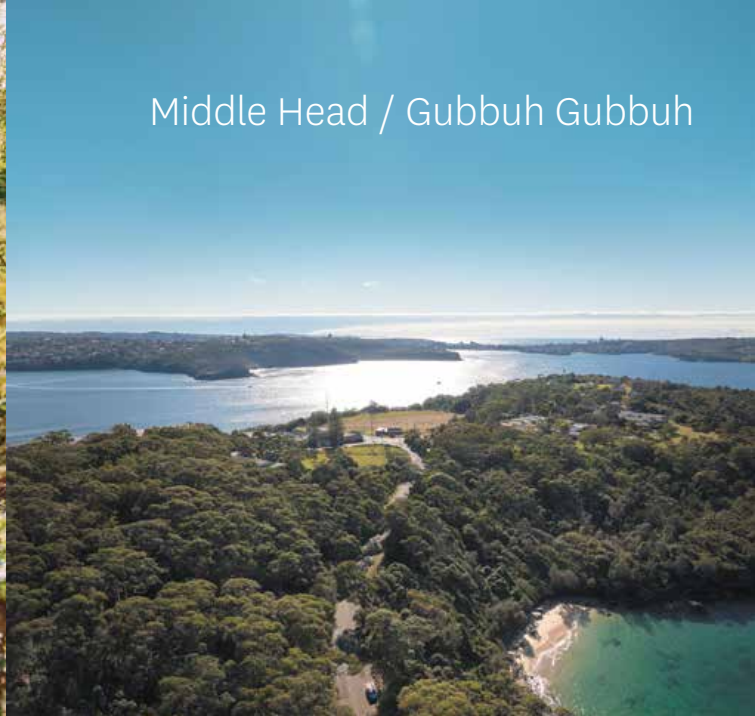
A major drawcard is Georges Head Lookout. Perched on the ridge above Chowder Bay, it features military relics (including gun emplacements) plus a picnic area with harbour views. Other highlights include tennis court hire, a weekly market and guided tours.



**Scan to plan  
your trip**



## Middle Head / Gubbeh Gubbuh



In addition to a sweeping view across Middle Harbour to North Head, Middle Head features tranquil coastal walks.

### Things to do

Unwind at a cafe or restaurant and get into the swing of things at our harbourside tennis court.

Other highlights include access to clothing optional beaches and historic military landmarks.



**Scan to plan  
your trip**



# Macquarie Lightstation

Vaucluse



Self-guided and group tours



Walking tracks



Bondi to Manly walk



Lookouts



Historic destination



Public transport

Located along the cliff top at Vaucluse in Sydney's Eastern Suburbs, Macquarie Lightstation is the site of Australia's first lighthouse.



## At a glance

Completed in 1818, Macquarie Lighthouse was designed by convict architect Francis Greenway for Governor of NSW, Lachlan Macquarie.

Due to crumbling foundations, it was rebuilt in the 1880s. The new tower was designed by the state's Colonial Architect James Barnet.

## Things to do

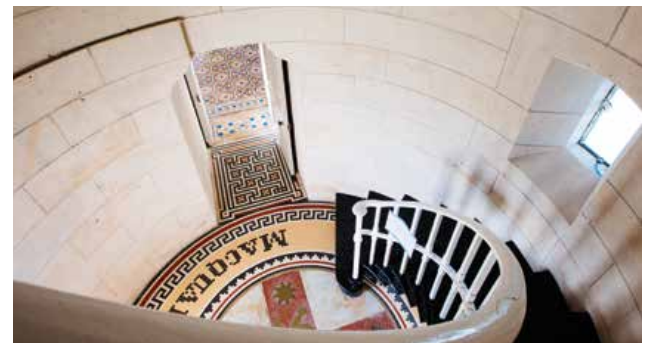
The lighthouse is occasionally opened for guided tours that afford access to the lantern room and balcony for sweeping views of the harbour and ocean.

## Feeling ambitious?

Embark on the 80km Bondi to Manly Walk, which includes a pit stop at Macquarie Lightstation.



Scan to plan  
your trip





# Former Marine Biological Station

Camp Cove, Watsons Bay



Natural attractions



Picnic areas



Historic destination



Public transport



Located a short walk from Macquarie Lightstation, at Camp Cove, the Former Marine Biological Station was one of the first buildings in Watsons Bay.

## At a glance

Like Sydney Hotel and Katoomba's Carrington Hotel, the heritage-listed sandstone cottage was designed by prominent architect John Kirkpatrick.

## Things to do

Although the charming building is closed to the public, visitors can relax at the adjoining park and nearby beach.



Scan to plan  
your trip



# Sub Base Platypus

## North Sydney



Self-guided and group tours



Bondi to Manly walk



Lookouts



Picnic areas



Natural attractions



Public transport



Historic destination



Free and paid parking



Formerly a torpedo factory, submarine base and gas works, Sub Base Platypus is a community recreation and work hub in North Sydney, homeland of the Cammeraygal people.

### Torpedo Factory Precinct

The Torpedo Factory Precinct is a sheltered space where visitors can enjoy views of Neutral Bay, see historical artefacts and photos, and engage with a vibrant artwork by Kamilaroi/Gamilaraay artist Dennis Golding.

### Waterfront parklands

Located at the foot of the Torpedo Factory Precinct, Wirra Birra Park is a place where visitors can connect with Country and enjoy the tranquillity afforded by a landscaped area abundant in native plants. Meanwhile, Oberon Park features shaded BBQs, a memorial honouring Australian submariners and a maritime-themed playground.

### Guided tours

Running select Saturdays, our Sub Base Stories Tour is an opportunity to explore a historic destination that was off-limits to the public for 150+ years!

### Sustainable furniture

The flagship store of sustainable furniture and homewares brand Koskela is located on the waterfront. Discover products by a diverse range of makers including First Nations creatives.



Scan to plan your trip



# Woolwich Dock & Parklands

## Hunters Hill Peninsula



Self-guided tour



Lookouts



Natural attractions



Historic destination



Walking tracks



Cafes



Picnic areas



Public transport



Paid parking



Situated on the shore opposite Cockatoo Island, Woolwich Dock and Parklands is a precinct steeped in maritime history.

### At a glance

Due to its position at the junction of Parramatta and Lane Cove rivers, the Wallumedegal people know the area as Moocooboola, meaning 'the meeting of the rivers'. The centrepiece of the precinct is Woolwich Dock, which dates to 1901. Local tradespeople continue to proudly uphold the site's maritime legacy.

### Things to do

Highlights include the ample picnic space afforded by Goat and Horse Paddocks as well as a waterfront cafe and the harbour view from Woolwich Lookout.



**Scan to plan  
your trip**



## Public transport guide

For further information including bus, ferry and train timetables, visit [transportnsw.info](http://transportnsw.info)



### Cockatoo Island / Wareamah

The F3 and F8 ferries operate to Cockatoo Island daily, departing from Circular Quay, Barangaroo and wharves along Parramatta River. The ferry ride from Circular Quay is approx 20 mins.

### North Head Sanctuary

The 161 bus runs from Manly Wharf to North Head Sanctuary daily. You can also walk from Manly Wharf to North Head Sanctuary in approx 30 mins.

### Headland Park

To get to Headland Park's precincts from Sydney's CBD, board the 100 bus at a designated stop in the city, get off at Mosman Junction and board the 111 bus. The 111 bus runs between South Mosman Wharf and Chowder Bay (with stops at Georges Heights and Middle Head) daily.

### Macquarie Lightstation

The 324 bus runs between Circular Quay and Watsons Bay (via Vaucluse) daily. Get off at the stop on Old South Head Road, near Macquarie Lightstation.

### Former Marine Biological Station

This landmark is closed to the public but you can enjoy the beach at Camp Cove. Ferries – as well as the 324 bus – operate between Circular Quay and Watsons Bay daily. From Watson's Bay, walk via Cliff and Pacific streets to reach Camp Cove.

### Woolwich Dock & Parklands

Catch the F8 ferry at Circular Quay and get off at Woolwich Wharf. From there, board the 538 bus, get off near Woolwich Pier Hotel and enter Woolwich Dock & Parklands via the Goat Paddock entrance.

### Sub Base Platypus

The F5 ferry operates between Circular Quay and Neutral Bay Wharf daily. Get off at North Sydney Ferry Wharf to reach Sub Base Platypus. Sub Base Platypus is also short walk from North Sydney and Milsions Point train stations. Plus, the 263 and 269 buses stop along Clark Road, 500 metres from Sub Base Platypus.

#### Visitor tip:

You can use an Opal card or contactless credit, debit or mobile device to pay for travel.



### Volunteer with us

From maintaining our destinations and greeting visitors through to delivering tours and filling administrative roles, our volunteers are invaluable.

Scan to learn more



## Become a subscriber!

Stay up-to-date about our destinations, including upcoming attractions.



Scan to sign up for our eNewsletter

## Join our online community!



@HarbourTrust



Harbour Trust



Australian Government  
Sydney Harbour Federation Trust

